

*Prevent Injury*  
*Prevent IAD*  
*Prevent CAUTI*



## *Male External Urine Management Device*

- ✓ *99.6% Accurate Measurement<sup>1</sup>*
- ✓ *One Size fits all*
- ✓ *Keeps skin dry*
- ✓ *Derma friendly, soft & flexible adhesive*
- ✓ *No leakage or vacuum lock*
- ✓ *Suction tube on top*



WOUND  
CARE



INFECTION  
CONTROL



INJURY  
PREVENTION

Qivi<sup>TM</sup>  
CAUTI Prevention

A novel male external urine management device that provides accurate output measurement, minimizes IAD and MASD, prevents CAUTI and eliminates Urethral trauma

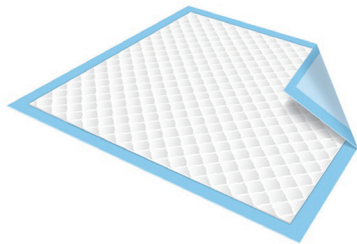
1) Data on company file.

2) Carolyn V. Gould, 'Guideline for Prevention of Catheter-Associated Urinary Tract Infections' CDC

3) Gardam M A, 'Overutilization of indwelling urinary catheters and the development of nosocomial urinary tract infections'

4) Campbell JL, et al. Incontinence-associated dermatitis: a cross-sectional prevalence study in the Australian acute care hospital setting. International Wound Journal

## EXISTING SOLUTIONS ARE INADEQUATE



Underpads

- Leads to constant exposure to Urine
- Leads to skin breakdown, IAD, MASD
- Output measurement not possible
- Leads to increased nursing time, nurse fatigue and back injuries



Indwelling Urinary Catheters

- Account for more than 75% of HAUTI's<sup>2</sup>
- Up to 50% catheters are avoidable in acute care<sup>3</sup>
- Cause injury, bladder spasm, rupture, etc.
- Prone to causing bacteriuria, bladder stones, AKI, Sepsis

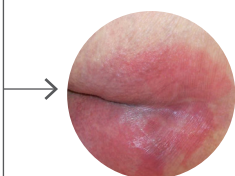


Condom/Sheath Catheters

- Inefficient at keeping skin dry
- Frequent size misfit challenges, uncomfortable for the patient
- Prone to leakage, skin abrasion, penile strangulation

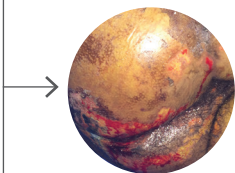
## INADEQUATE SOLUTIONS LEAD TO COMPLICATIONS

CONSTANT EXPOSURE TO URINE, BACTERIA, MOISTURE



### IAD

21-42% incontinent patients develop IAD<sup>4</sup>



### HAPI

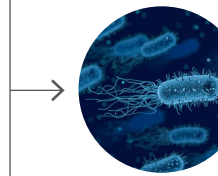
Up to 2.5M patients acquire HAPI each year<sup>5</sup>; Costs up to \$21,410 per patient<sup>6</sup>



### Wound Contamination

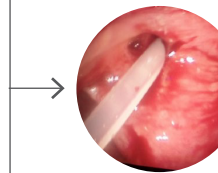
Open systems are inefficient at protecting wounds from getting contaminated by UI

CONSTANT EXPOSURE TO URINE, BACTERIA, MOISTURE



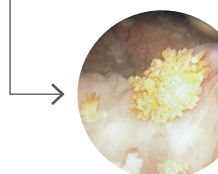
### CAUTI

CAUTI prevalence goes up to 7.5/1000 catheter days<sup>7</sup> True cost per infection is \$10,197<sup>8</sup>



### Urethral Injury

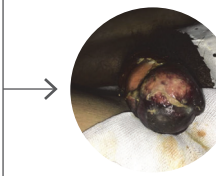
Leads to additional LOS of 9.4-19 days Costs up to \$10,048 per injury<sup>9</sup>



### Bladder Stones

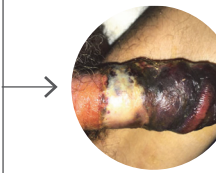
Prolonged catheterization may lead to bladder and kidney stones Costs more than \$5Billion each year<sup>10</sup>

SLIZE MISFIT LEADING TO STRANGULATION



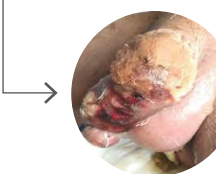
### Maceration

Penile complications can arise in 15-30% chronic condom catheter users<sup>11</sup>



### Strangulation

Incorrect sized sheaths secured with multiple tapes & adhesives may cause strangulation



### Gangrene

Extremely rare, but may lead to surgical intervention, prolonged LOS and permanent damage

*QiVi is a safe, efficacious, and comfortable alternative for urine management.  
Nurses across the continuum of care are making the switch.  
Order your free trial today!*

## PRODUCT ORDERING INFORMATION

	Catalog Number	Quantity/Box	MOQ
QiVi Male External Urine Management Device	MG-12019-001	15 QiVi/Box	1 Box

Consure Medical  
San Diego, CA

MSM-051-00 Manufactured by Consure Medical  
All IPR (patents & trademarks) are properties of Consure Medical

(800) 520 4714

[www.consuremedical.com](http://www.consuremedical.com)

[sales@consuremedical.com](mailto:sales@consuremedical.com)

5) Karen Bauer, 'Pressure Ulcers in the United States' Inpatient Population From 2008 to 2012: Results of a Retrospective Nationwide Study'

6) Spetz J, Aydin C, Brown DS, et al. The value of reducing hospital-acquired pressure ulcer prevalence: an illustrative analysis. JONA

7) CDC - Guideline for Prevention of Catheter-Associated Urinary Tract Infections (2009)

8) Steven Porter, 'How much does a CAUTI cost?' Health Leaders (2018)

9) Davis NF, 'Incidence, Cost, Complications and Clinical Outcomes of Iatrogenic Urethral Catheterization Injuries: A Prospective Multi-Institutional Study'

10) Hyams E S, 'Economic impact of urinary stones'

11) Newman, 'External Catheter Collection Systems.' In Clinical Application of Urologic Catheters, Devices and Products